

# The Fierce Green Fire

A Newsletter of the Wofford College Environmental Studies Program

*Some of the seniors spent the weekend with Professor Lane, Dr. Savage, and Dr. Brewitt on the annual trip to Cherokee, NC and heard from guest speaker Thomas Rain Crowe.*



Volume 7, Issue 24

## *From Kayaking to Flute-Playing: A Senior Spring with ENVS*

*By Garrett Heath*



The Environmental Studies Senior Class recently kayaked the Lawson's Fork as a part of our Senior Seminar. Much has changed since our first journey on the river three years ago: Fall has changed to spring, knowledge has increased our understanding of the world, and our personal treks have taken many turns. Reflection has harnessed our class with the ability to observe growth and make judgments about the changes that have occurred over the past four years. Floating upstream to the chute on a cloudy day properly bookends our physical and intellectual interactions as undergraduates with the natural world.

A smaller group of seniors also spent the weekend in and around the Blue Ridge Mountains. Our schedule was packed: drive along the parkway, enjoy the unique views and waterfalls, interact with Native American sacred sites, observe the reintroduced elk in their habitat. Our base camp for the trip was Professor Lane's property. Here, the seniors—along with Professor Lane, Dr. Savage, and the complete Brewitt family—spent time in discussion and in reflection as freshwater springs bubbled out from the ground in a deeply verdant landscape. We students spent the evening sleeping in The Tower—a unique, two-story structure built by Professor Lane's friend and fellow writer,

Thomas Rain Crowe. With doors open and the sounds of the forest nearby, we slept among a small library, writing desk, and a distinctive, indescribable place-based energy.

The next morning, Thomas Rain Crowe visited our group. He read from his memoir *Zoro's Field* and played his traditional, double barrel Native American flute. Crowe created an awe-inspiring soundscape that captured our attention and completed a narrative for our time in the mountains.

On the way back to Wofford, we stopped at a Lake Jocassee overlook and Judaculla Rock. Both of these sites show an anthropogenic attempt to shape the natural world: one a product of a desire for hydrologic energy, the other an eroded mound of soapstone meant to record elements of the everyday and of the sacred. Our drive back was full of conversation and reflection as we approached campus and the end of our time within the department. Although our class discussions and activities in the field are coming to a close, our perception of the world—one standing upon a steady, three-legged stool—will survive well beyond our time in the Black Science Annex or with our fellow Wofford environmentalists.



*Last week during Senior Seminar class, Professor Lane kayaked with students on Lawson's Fork and made time for a writing reflection of their past four years at Wofford.*



## Upcoming Events and Opportunities

May 1<sup>st</sup>-21<sup>st</sup>  
Daniel 221

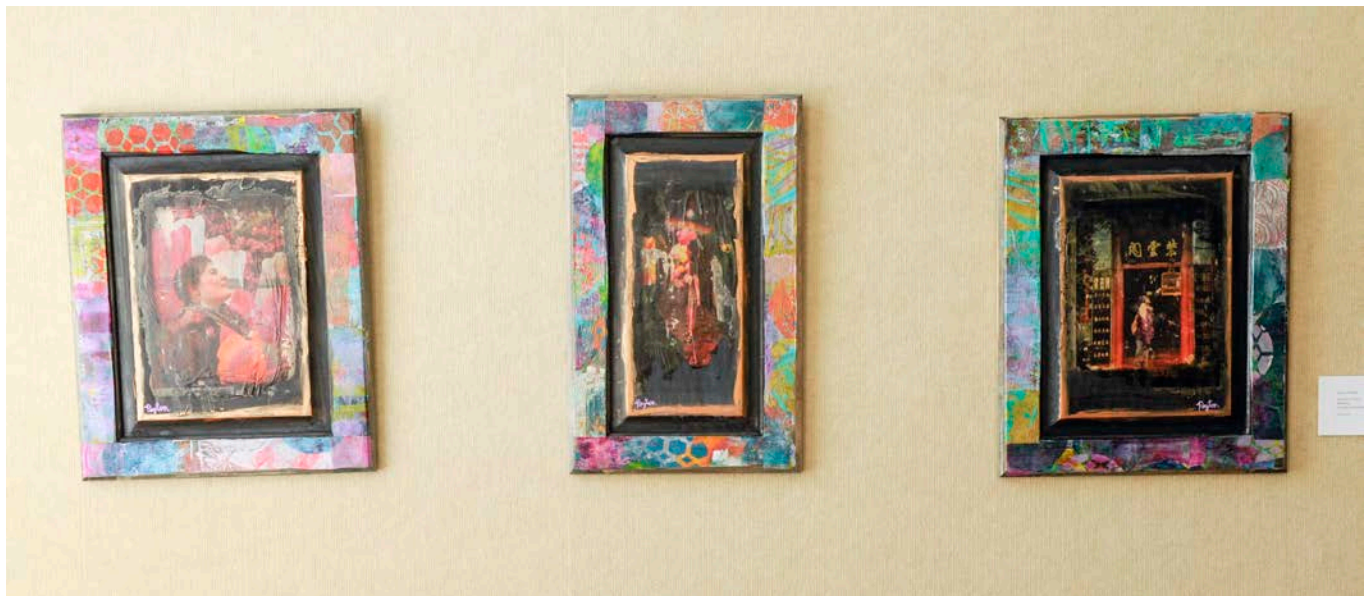
**Memorial Exhibition for MacGregor Ruffin:** Please remember to visit this exhibit of MacGregor and friends' artwork before you leave campus for the summer.

May 10<sup>th</sup>  
5:00pm-8:00pm  
RJ Rockers

**Brews for Bikes:** Come out and celebrate globalbike's 11<sup>th</sup> Anniversary! Tickets are \$10 in advance, \$12 at the door, children 12&under free. There will be a streatery Food Truck, a silent auction, cornhole tournament, and activities for the kids. Order your tickets now: <https://www.eventbrite.com/e/brews-for-bikes-tickets-33902483240>

May 20<sup>th</sup>  
9:00am  
Lake Blalock Park

**6<sup>th</sup> Annual Paddle Fest:** Spartanburg Water hosts this annual event at Lake Blalock to increase stewardship of our water resources. Educational paddle tours, kayak & canoe races, and paddle classes are offered to the community. Register at: <http://go-greenevents.com/event/id/5388>



*Artwork by ENVS graduate Peyton Proffitt '16 is part of the Memorial Exhibition for MacGregor Ruffin.*

## PROFILE OF THE WEEK:

### *Indiana University – Bloomington – School of Public and Environmental Affairs*

*US News & World Report* ranks Indiana University's graduate program in the School of Public and Environmental Affairs as #1 in the nation. Bloomington is one of the nation's "Top Ten College Towns" and *Forbes* magazine ranks it #1 for Work-Life balance.

IU-Bloomington's School of Public & Environmental Affairs (SPEA) offers a Masters in Public Administration (MPA) with a concentration in Environmental Policy and Natural Resource Management, a Masters of Science in

Environmental Science (MSES), and a one-of-kind dual Masters program in Public Administration and Environmental Science (MPA/MSES). SPEA's MPA program has a top ranked concentration in Environmental Policy and Management. These nationally recognized programs offer students the opportunity to become environmental experts from the largest school of public administration and public policy in the U.S. <https://spea.indiana.edu/masters/index.html>